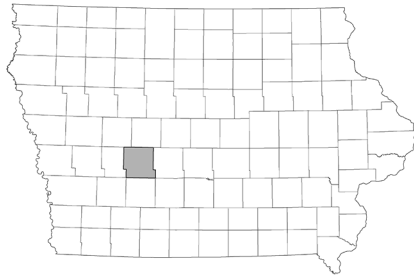


# Data for Decision Makers



## Guthrie County County Profile

report created: 05/15/2023

### Population profile

Guthrie County is a metropolitan county in west central Iowa. It is composed of eleven incorporated communities and their surrounding rural areas. From 2010 to 2020, Guthrie County's population decreased by 3.02% while the state's population increased by 4.73%.

#### Total Population

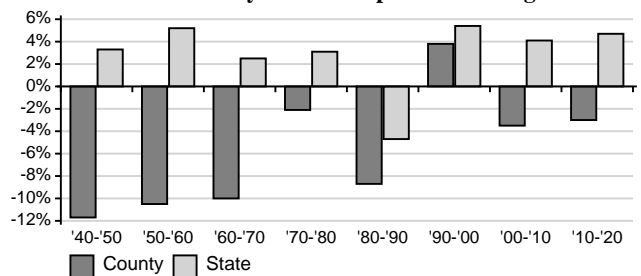
City	2000 <sup>2</sup>	2010 <sup>3</sup>	2020 <sup>4</sup>
Yale	287	246	267
Casey*	478	426	387
Coon Rapids*	1,305	1,305	1,300
Guthrie Center	1,668	1,569	1,593
Jamaica	237	224	195
Adair*	839	781	791
Bagley	354	303	233
Menlo	365	353	345
Bayard	536	471	405
Panora	1,175	1,124	1,091
Stuart*	1,712	1,648	1,782
<b>Male Total</b>	<b>5,609</b>	<b>5,443</b>	<b>NA</b>
<b>Female Total</b>	<b>5,744</b>	<b>5,511</b>	<b>NA</b>
<b>County Total</b>	<b>11,353</b>	<b>10,954</b>	<b>10,623</b>
<b>State Total</b>	<b>2,926,324</b>	<b>3,046,355</b>	<b>3,190,369</b>

\* City is located in multiple counties, total population is provided.

#### Neighboring Counties - Percent Population Change

County	'90 <sup>1</sup> -'00 <sup>2</sup>	'00 <sup>2</sup> -'10 <sup>3</sup>	'10 <sup>3</sup> -'20 <sup>4</sup>
Adair, IA	-1.97%	-6.81%	-2.42%
Audubon, IA	-6.87%	-10.41%	-7.27%
Carroll, IA	-0.01%	-2.82%	-0.27%
Cass, IA	-2.93%	-4.96%	-5.94%
Dallas, IA	36.95%	62.29%	50.72%
Greene, IA	3.20%	-9.94%	-6.05%
<b>Guthrie, IA</b>	<b>3.82%</b>	<b>-3.51%</b>	<b>-3.02%</b>
Madison, IA	12.30%	11.84%	5.54%
State of Iowa	5.39%	4.10%	4.73%

#### Guthrie County Percent Population Change



#### Regional Director

Rich Wrage  
1327 SE Marshall Street  
Boone, IA 50036  
rwrage@iastate.edu  
515-432-3882

#### County Office

Krista Downing  
212 State St  
Guthrie Center, IA 50115  
kristad@iastate.edu  
641-747-2276

<http://indicators.extension.iastate.edu>

# Demographic Profile

# Guthrie County

As with the other 98 counties in the state, Guthrie County's population is predominantly white, though between 2010 and 2020 there was a slight decrease in the percent of the population that is white. The percent of the population of Hispanic origin had a slight increase over the same time period. In 2010, Guthrie County had an equal percentage of young people (17 or younger) and a higher percentage of older people (65+) compared to the state. There is a lower percentage of individuals 25+ with a Bachelor's degree or higher in Guthrie County compared with the state.

**Percentage of Population by Race/Hispanic Origin<sup>3,4</sup>**

Race Groups	County		State	
	2010	2020	2010	2020
One Race Only	99.1%	96.9%	98.2%	94.4%
White	97.6%	94.4%	91.3%	84.5%
White Alone, Not Hispanic	96.7%	93.8%	88.7%	82.7%
Black or African American	0.1%	0.3%	2.9%	4.1%
Asian	0.3%	0.4%	1.7%	2.4%
American Indian	0.2%	0.2%	0.4%	0.5%
Hawaiian/Other Pacific Islander	0%	0.2%	0.1%	0.2%
Other	0.8%	1.4%	1.8%	2.8%
Two or more races	0.9%	3.1%	1.8%	5.6%
Hispanic origin*	1.8%	2.6%	5%	6.8%

\* Hispanics can be of any race.

**Percentage of Population by Age<sup>2,3</sup>**

Age Groups	County		State	
	2000	2010	2000	2010
17 or younger	23.6%	23.9%	25.1%	23.9%
0 - 4	5.5%	5.6%	6.4%	6.6%
5 - 9	6.6%	6.5%	6.9%	6.6%
10 - 14	6.8%	7.3%	7.2%	6.6%
15 - 17	4.7%	4.5%	4.6%	4.1%
18 - 24	6.3%	5.1%	10.2%	10.0%
25 - 44	24.8%	21.3%	27.6%	24.5%
45 - 64	24.9%	29.8%	22.2%	26.7%
65 or older	20.5%	19.9%	14.9%	14.9%
65 - 84	17.4%	16.8%	12.7%	12.4%
85 or older	3.1%	3.1%	2.2%	2.5%
Median Age (years)	41.9	44.8	36.6	38.1
Age Dependency <sup>*b</sup>	78.9	77.9	66.7	63.4
Old-Age	36.7	35.4	24.8	24.3
Child	42.2	42.5	41.8	39.1

<sup>a</sup>Age Dependency Ratio<sup>b</sup>

**Households and Families by Type, 2017-2021<sup>5</sup>**

	County		State	
	Estimate	MOE*	Estimate	MOE*
Total Households	4,463	+/-157	1,275,893	+/-3,252
Family Households	70.8%	+/-3.7%	62.7%	+/-0.3%
Married-couple	59.9%	+/-3.8%	49.4%	+/-0.4%
Female Householder <sup>a</sup>	7.2%	+/-1.8%	9.1%	+/-0.2%
Male Householder <sup>a</sup>	3.7%	+/-1.3%	4.3%	+/-0.1%
Nonfamily Households	29.2%	+/-3.5%	37.3%	+/- 0.3%
Householder Living Alone	24.9%	+/-3.4%	29.8%	+/-0.3%

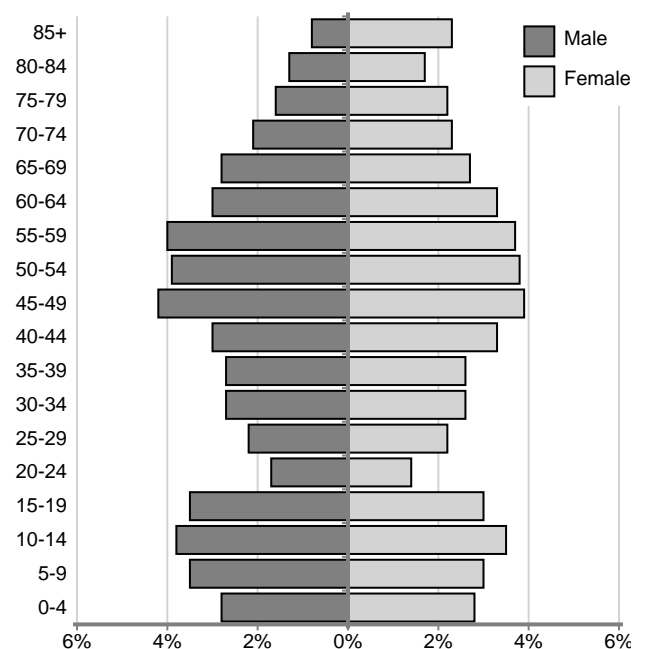
<sup>a</sup>No spouse present

**Educational Attainment, 2017-2021<sup>5</sup>**

	County		State	
	Estimate	MOE*	Estimate	MOE*
Population 25 and older	7,568	+/-34	2,119,884	+/-809
High School Graduate or Higher	94.4%	+/-1.1%	92.8%	+/-0.1%
Bachelor's Degree or Higher	20.6%	+/-2.1%	29.7%	+/-0.3%

\*MOE = the margin of error for American Community Survey estimates<sup>5</sup> which is a numerical value that when added to or subtracted from the point estimate value gives the range of a 90% confidence interval around the estimate.

**Guthrie County Population Pyramid, 2010<sup>3</sup>**



# Socioeconomic Profile

# Guthrie County

The median household income in Guthrie County is greater than the median household income of the state. Both Guthrie County and the state have more households in the \$50,000 to \$99,999 household income group. The median value of owner-occupied housing can be quite different from county to county. The median value of owner-occupied housing units is lower in Guthrie County than for the state. There is a higher percentage of vacant housing units in Guthrie County than there is for the state. Many housing units in Guthrie County were built prior to 1940.

**Median Household and Per Capita Income, 2017-2021<sup>5</sup>**

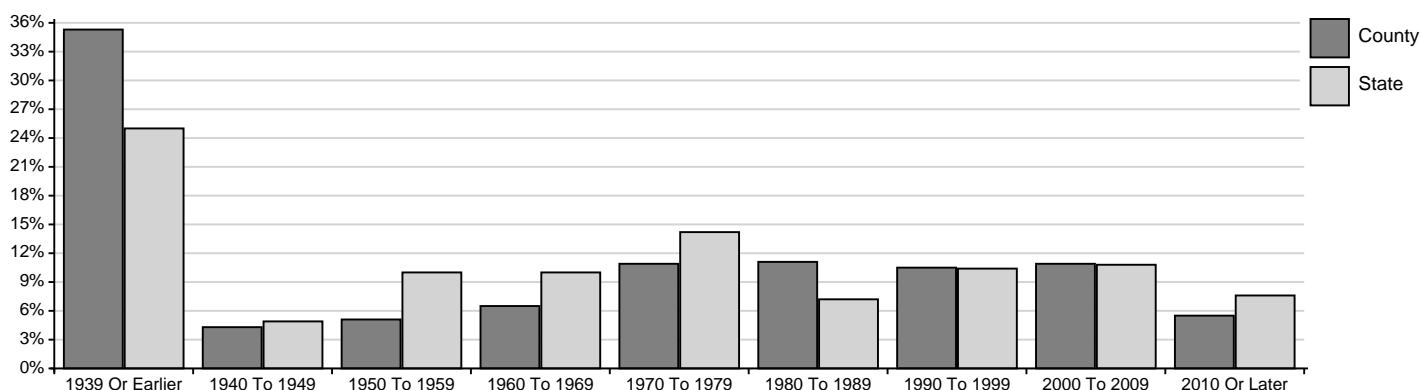
	County		State	
	Estimate	MOE*	Estimate	MOE*
Total Households	4,463	+/- 157	1,275,893	+/- 3,252
Less than \$14,999	8.9%	+/- 1.7%	8.5%	+/- 0.4%
\$15,000 To \$34,999	15.3%	+/- 1.8%	16.8%	+/- 0.6%
\$35,000 To \$49,999	13.6%	+/- 2.3%	12.6%	+/- 0.2%
\$50,000 To \$99,999	31.1%	+/- 2.1%	33.0%	+/- 0.6%
\$100,000 Or More	31.1%	+/- 2.4%	29.2%	+/- 0.8%
Median Household Income	\$67,625	+/- \$5,396	\$65,429	+/- \$397
Median Family Income	\$83,417	+/- \$2,891	\$83,979	+/- \$526
Per Capita Income	\$35,942	+/- \$2,240	\$34,817	+/- \$223

**Housing Characteristics, 2017-2021<sup>5</sup>**

	County		State	
	Estimate	MOE*	Estimate	MOE*
Total Units	5,778	+/- 45	1,407,100	+/- 583
Vacant	22.8%	+/- 2.6%	9.3%	+/- 0.2%
Occupied	77.2%	+/- 2.6%	90.7%	+/- 0.2%
Occupied <sup>a</sup>	4,463	+/- 157	1,275,893	+/- 3,252
Owner	81.6%	+/- 2.2%	71.6%	+/- 0.2%
Renter	18.4%	+/- 2.2%	28.4%	+/- 0.2%
Median Rent <sup>b</sup>	\$725	+/- \$28	\$845	+/- \$4
Median Value <sup>c</sup>	\$138,000	+/- \$16,189	\$160,700	+/- \$621

<sup>a</sup>Occupied Units, <sup>b</sup>Median gross rent of renter-occupied units, <sup>c</sup>Median value of owner-occupied units

**Percent Housing by Year Built, 2017-2021<sup>5</sup>**



In Guthrie County there is a higher percentage of workers in management, business, science, and arts occupations than any other occupation category while the production, transportation, and material moving occupation category makes up 13.7% of occupations of the civilian employed population in the county.

**Occupation of the Civilian Employed Population, 2017-2021<sup>5</sup>**

	County		State	
	Estimate	MOE*	Estimate	MOE*
Civilian employed population 16 years and over	5,303	+/- 161	1,620,796	+/- 5,425
Management, business, science, and arts	34.6%	+/- 2.8%	37.6%	+/- 0.3%
Service	13.1%	+/- 2.0%	15.6%	+/- 0.2%
Sales and office	23.4%	+/- 3.2%	20.1%	+/- 0.2%
Natural resources, construction, and maintenance	15.2%	+/- 1.9%	9.6%	+/- 0.2%
Production, transportation, and material moving	13.7%	+/- 2.4%	17.0%	+/- 0.2%

Guthrie County has a lower proportion of the population age 16 or older in the labor force than the state. A portion of those who are not in the labor force are people who are retired. The percent unemployed in Guthrie County is lower than that for the state overall. Earnings data are provided for the population 16 and over who have earnings. Median<sup>a</sup> earnings in Guthrie County tend to be higher than the median earnings for the state. There is a lower percentage of families in Guthrie County below poverty level than for the state. Families with children tend to have a higher rate of poverty than families without children.

**Employment Status, 2017-2021<sup>5</sup>**

	County		State	
	Estimate	MOE*	Estimate	MOE*
Population 16+	8,534	+/- 37	2,523,649	+/- 1,319
in labor force	64.5%	+/- 1.8%	66.9%	+/- 0.2%
not in labor force	35.5%	+/- 1.8%	33.1%	+/- 0.2%
Civilian labor force	5,502	+/- 155	1,686,696	+/- 5,293
Unemployed	3.6%	+/- 1.2%	3.9%	+/- 0.2%

**Median Employment Earnings, 2017-2021<sup>5</sup>**

	County		State	
	Estimate	MOE*	Estimate	MOE*
Population 16+ <sup>a</sup>	6,031	+/- 179	1,795,056	+/- 4,514
Median Earnings	\$38,251	+/- \$2,254	\$37,604	+/- \$212
Female	\$32,534	+/- \$1,798	\$30,969	+/- \$213
Male	\$45,689	+/- \$3,968	\$44,369	+/- \$274
Female, full time <sup>b</sup>	\$43,272	+/- \$3,270	\$43,442	+/- \$221
Male, full time <sup>b</sup>	\$56,056	+/- \$4,314	\$55,526	+/- \$335

<sup>a</sup> with earnings, <sup>b</sup> year round

**Individuals Below Poverty Level by Race, 2017-2021<sup>5</sup>**

	County		State	
	Estimate	MOE*	Estimate	MOE*
Total Population <sup>a</sup>	10,492	+/-71	3,084,598	+/-829
Percent Below	9.8%	+/-0.2%	11%	+/-0.2%
White Alone	9.5%	+/-2.3%	9.6%	+/-0.2%
Black/African American Alone	**%	+/-**%	29.7%	+/-2.3%
Asian/Pacific Islander Alone	**%	+/-**%	13.8%	+/-1.4%
American Indian Alone	**%	+/-**%	22.9%	+/-4.4%
Hawaiian Alone	**%	+/-**%	23.8%	+/-6.4%
Other Race Alone	**%	+/-**%	17.3%	+/-1.8%
Two or more races	**%	+/-**%	19.3%	+/-1.4%
Hispanic origin <sup>+</sup>	**%	+/-**%	17.9%	+/-1.2%

<sup>a</sup>for whom poverty status is determined, <sup>+</sup> Hispanics can be of any race. \*\*MOE is high, use state estimate.

\*MOE = the margin of error for American Community Survey estimates<sup>5</sup> which is a numerical value that when added to or subtracted from the point estimate value gives the range of a 90% confidence interval around the estimate.

**Individuals and Families Below Poverty Level, 2017-2021<sup>5</sup>**

	County		State	
	Estimate	MOE*	Estimate	MOE*
Total Population <sup>a</sup>	10,492	+/-71	3,084,598	+/-829
Below poverty	9.8%	+/-0.2%	11%	+/-0.2%
17 and under	14.1%	+/-5.1%	13%	+/-0.5%
18 - 64	7.6%	+/-1.9%	11.3%	+/-0.2%
65+	10.8%	+/-4.4%	7.3%	+/-0.2%
All Families	6.7%	+/-2.6%	7%	+/-0.2%
with children	11.4%	+/-4.4%	11.4%	+/-0.4%
Married Couple	**%	+/-**%	3.2%	+/-0.1%
with children	**%	+/-**%	4.2%	+/-0.3%
Female HH <sup>b</sup>	27.1%	+/-12%	25.6%	+/-1%
with children	35.5%	+/-15.4%	32.5%	+/-1.3%

<sup>a</sup> for whom poverty status is determined, <sup>b</sup> female householder, no spouse present, \*\*MOE is high, use state estimate.

### This series was prepared by:

Christopher J. Seeger, Professor & Extension Specialist  
Bailey Hanson, Data Analyst II & Extension Specialist  
Sandra Burke, Research Scientist III & Extension Specialist

For more information on these and other topics, please call the Extension and Outreach specialists listed on the cover page or visit the ISU Extension and Outreach Indicators Portal at [indicators.extension.iastate.edu](http://indicators.extension.iastate.edu)

This institution is an equal opportunity provider. For the full non-discrimination statement or accommodation inquiries, go to [www.extension.iastate.edu/diversity/ext](http://www.extension.iastate.edu/diversity/ext).

### Information in this document was derived from:

- <sup>1</sup> U.S. Census Bureau; Decennial Census 1990, Summary File 1
- <sup>2</sup> U.S. Census Bureau; Decennial Census 2000, Summary File 1
- <sup>3</sup> U.S. Census Bureau; Decennial Census 2010, Summary File 1
- <sup>4</sup> U.S. Census Bureau; Decennial Census 2020, State Redistricting Data Summary File
- <sup>5</sup> U.S. Census Bureau; American Community Survey 2017-2021

<sup>a</sup> Median is the middle value of a distribution.

<sup>b</sup> The age dependency ratio compares, by age, those typically not in the labor force with those who typically are in the labor force. Old Age dependency is persons 65+ per 100 persons age 18-64. Child dependency is persons under age 18 per 100 persons age 18-64. The total age dependency ratio is persons under age 18 plus persons 65 or older per 100 persons age 18-64.