

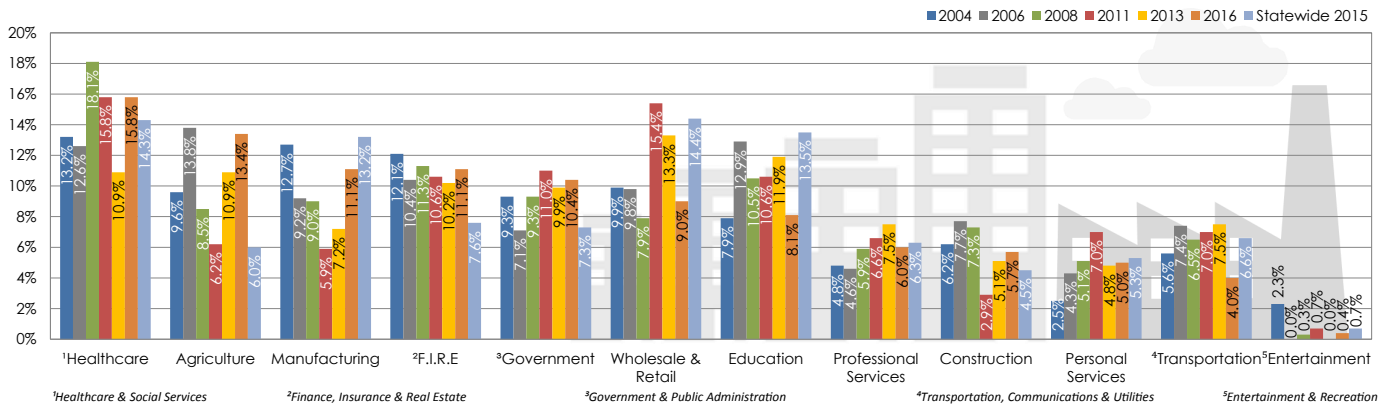
LABORSHED TRENDS:

2004-2016

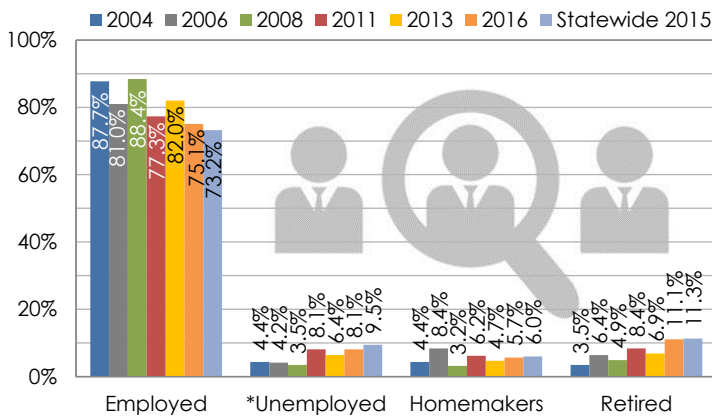
GUTHRIE COUNTY, IOWA LABORSHED AREA



Industries of the Employed (ordered by most recent year, high-to-low):

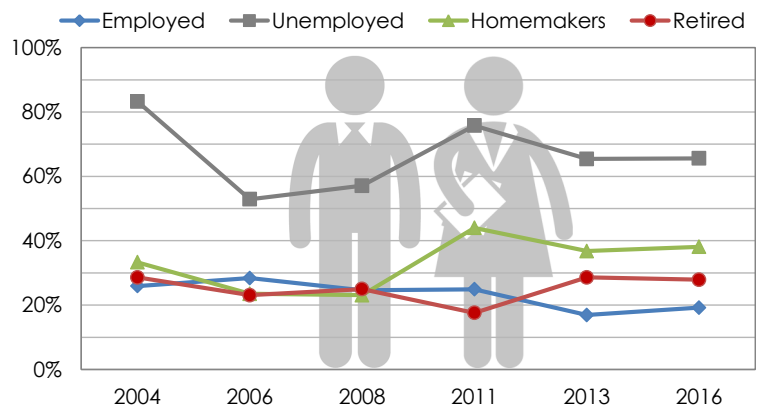


*Employment Status:

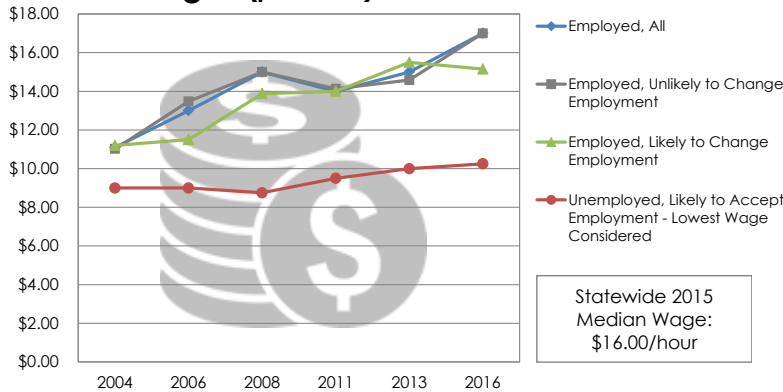


*Employment status is self-identified by the survey respondent. The unemployment percentage does not reflect the unemployment rate published by the U.S. Bureau of Labor Statistics, which applies a stricter definition.

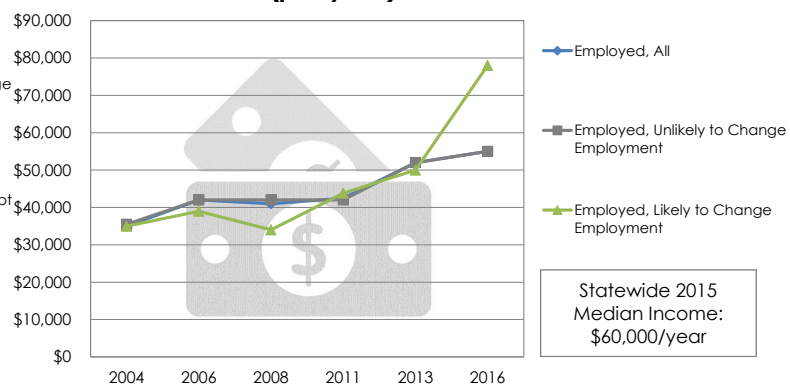
Likelihood to Change/Accept Employment (by employment status):



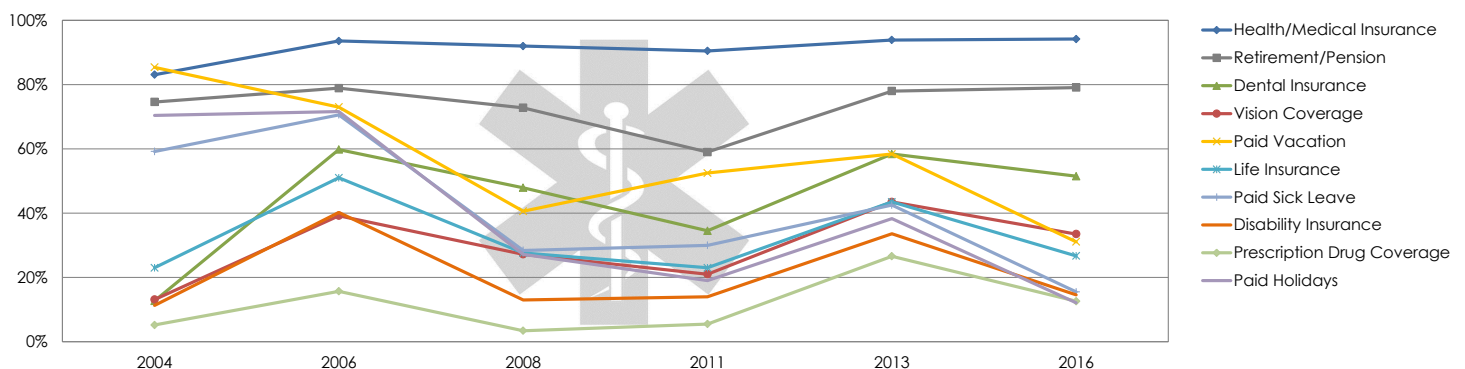
Median Wages (per hour):



Median Salaries (per year):

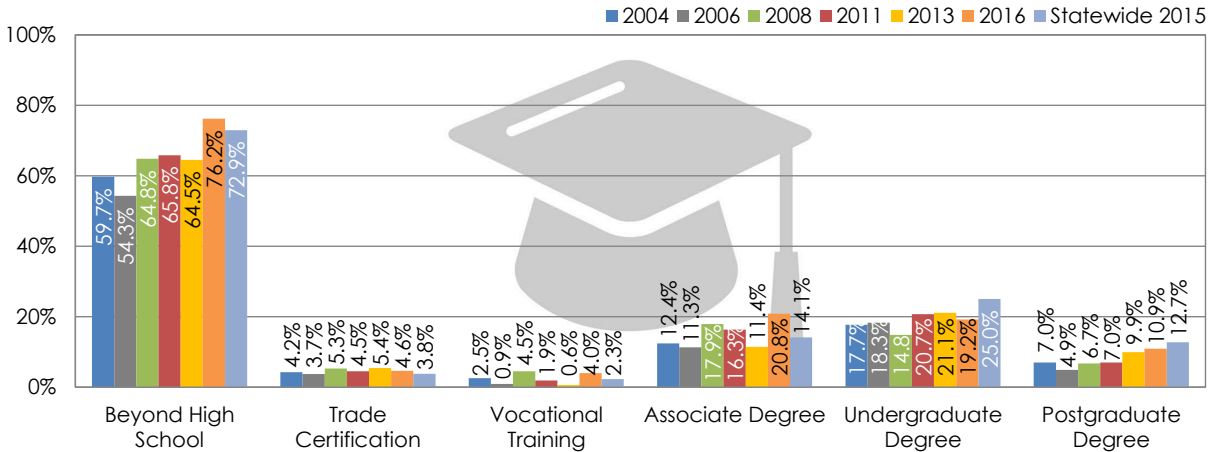


Top Current Benefits of the Full-Time Employed (ordered by most recent year, high-to-low):



LABORSHED TRENDS: 2004-2016

Education Level of the Employed:

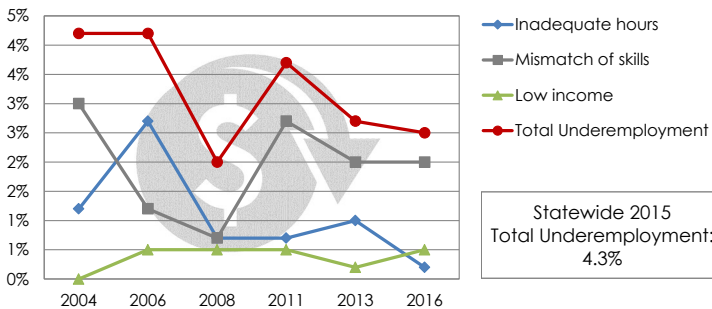


Additional Education/Training Required (as perceived by respondents):

Employed Likely to Change Employment	
2004	44.6%
2006	47.3%
2008	45.5%
2011	47.4%
2013	53.6%
2016	40.4%

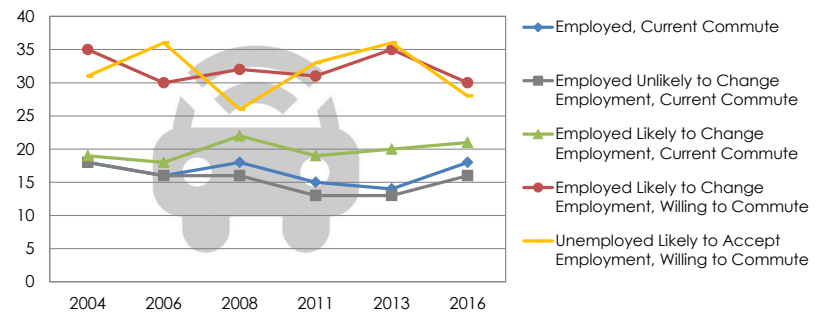
Unemployed Likely to Accept Employment	
2004	50.0%
2006	44.4%
2008	62.5%
2011	20.0%
2013	29.4%
2016	33.3%

*Underemployment:



*As of calendar year 2015, IWD revised criteria for underemployment. Previously reported underemployment data may not match percentages reported here.

Average Commute (in miles):



Job Search Resources (ordered by most recent year, high-to-low):

