

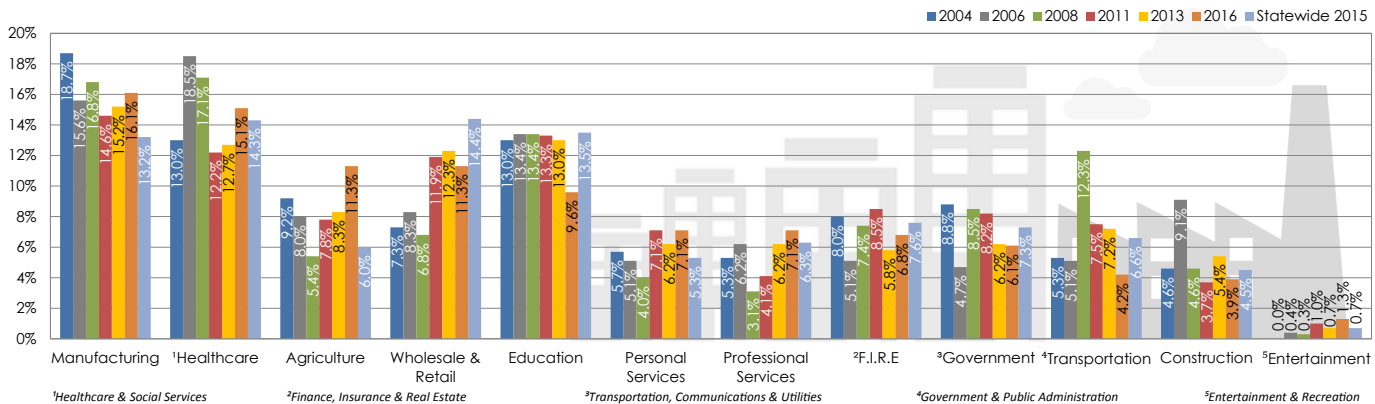
# LABORSHED TRENDS:

# 2004-2016

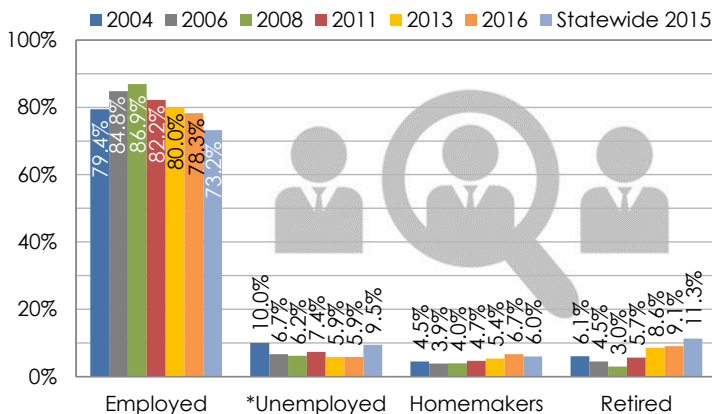
## ADAIR COUNTY, IOWA LABORSHED AREA



Industries of the Employed (ordered by most recent year, high-to-low):

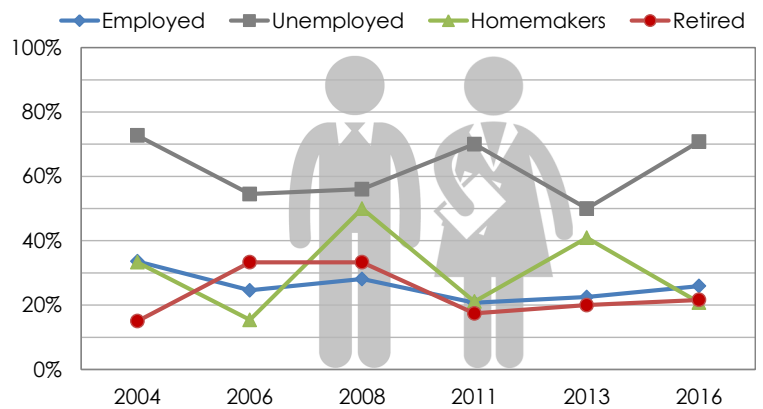


### \*Employment Status:

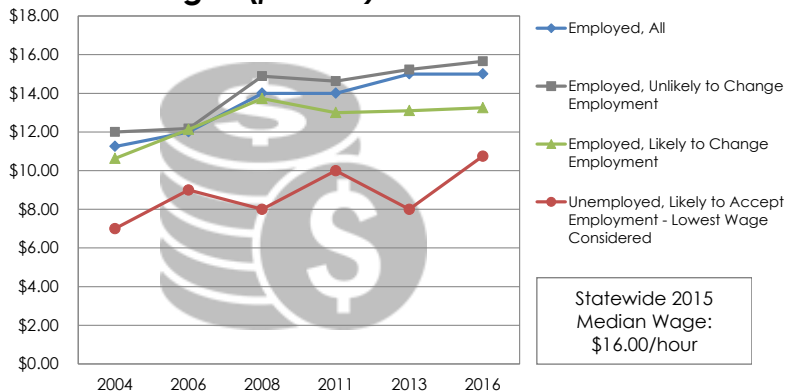


\*Employment status is self-identified by the survey respondent. The unemployment percentage does not reflect the unemployment rate published by the U.S. Bureau of Labor Statistics, which applies a stricter definition.

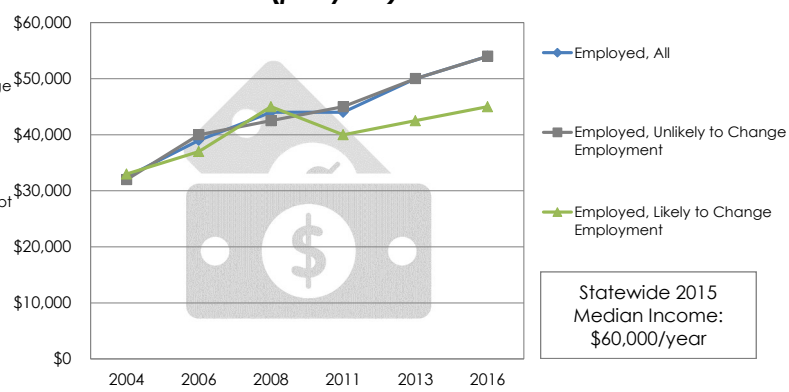
### Likelihood to Change/Accept Employment (by employment status):



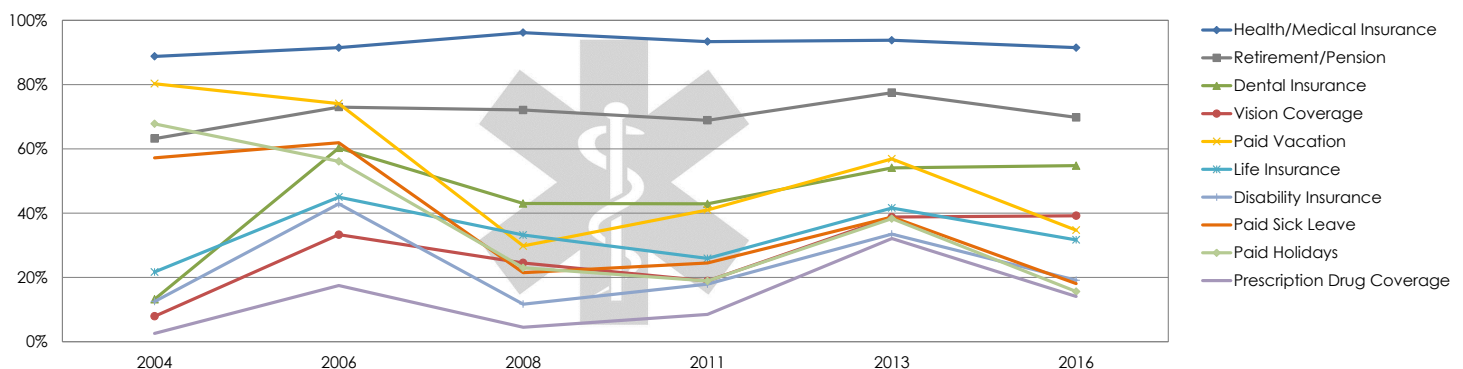
### Median Wages (per hour):



### Median Salaries (per year):

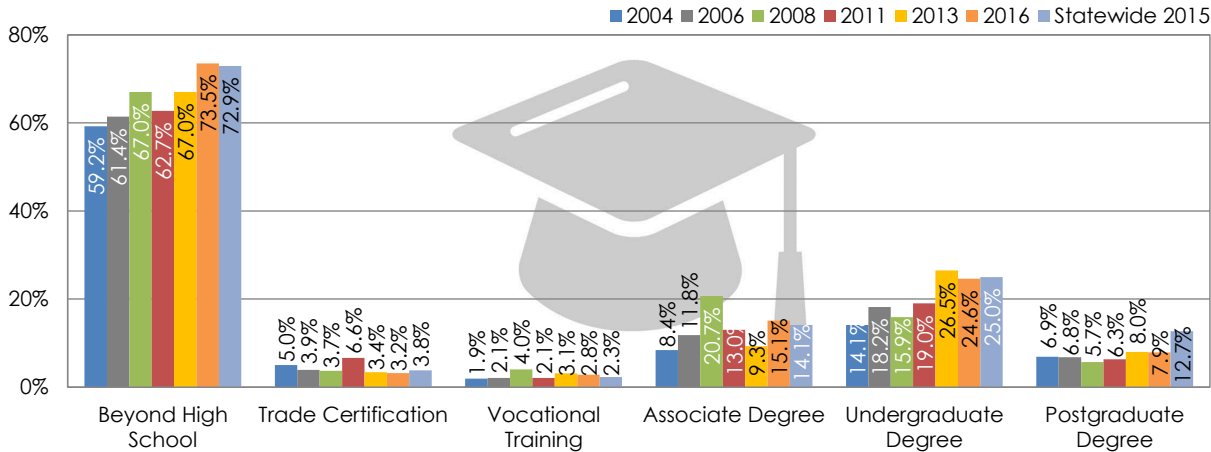


### Top Current Benefits of the Full-Time Employed (ordered by most recent year, high-to-low):



# LABORSHED TRENDS: 2004-2016

## Education Level of the Employed:

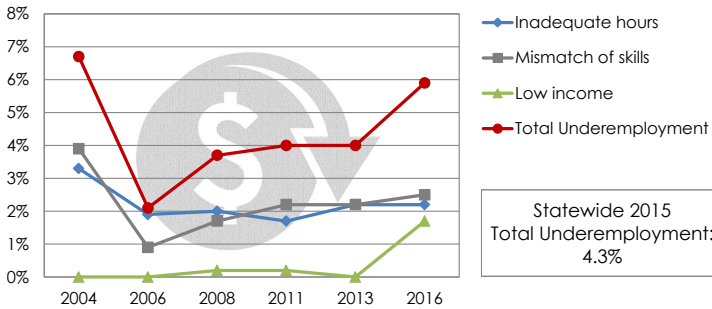


## Additional Education/Training Required (as perceived by respondents):

Employed Likely to Change Employment	
2004	44.8%
2006	53.6%
2008	47.5%
2011	55.1%
2013	42.5%
2016	33.8%

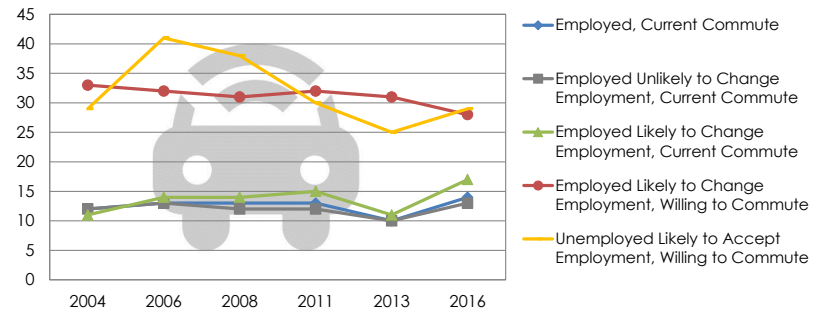
Unemployed Likely to Accept Employment	
2004	33.3%
2006	33.3%
2008	35.7%
2011	33.3%
2013	16.7%
2016	26.7%

## \*Underemployment:



\*As of calendar year 2015, IWD revised criteria for underemployment. Previously reported underemployment data may not match percentages reported here.

## Average Commute (in miles):



## Job Search Resources (ordered by most recent year, high-to-low):

